

Follow the steps below to make your own ruler box magnet!
This is a beginner-friendly activity for ages 18 and above.

Supplies:

- 2 Rulers
- 8 small tack nails + hammer + knife
- Silicone + wood glue
- Refrigerator magnets
- Acrylic paint + craft stick

Step 1: Cut pieces



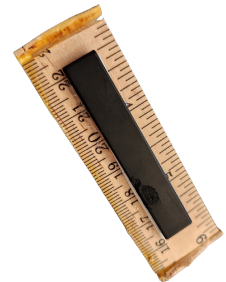
Use a box cutter/x-acto knife to cut:
Three (3-inch pieces) for the front, back, and bottom of your box. Two (1.0-inch pieces) for the sides.
Tip: Score a line & break in half at line. Sandy rough edges.

Step 2: Arrange & Glue pieces



Assemble box without glue (sides go around base).
Apply wood glue with craft stick to each edge.
Gently hammer in tack nails (8) into each side.
*Optional: use hot glue instead of wood glue & nails.

Step 3: Magnets



Put sticky tape on back of magnet. Apply thin layer of caulk to tape. Adhere to side of box. Use caulk around cracks as needed.



**Use paint and/or stain to
color your box.
Fill with trinkets!**

